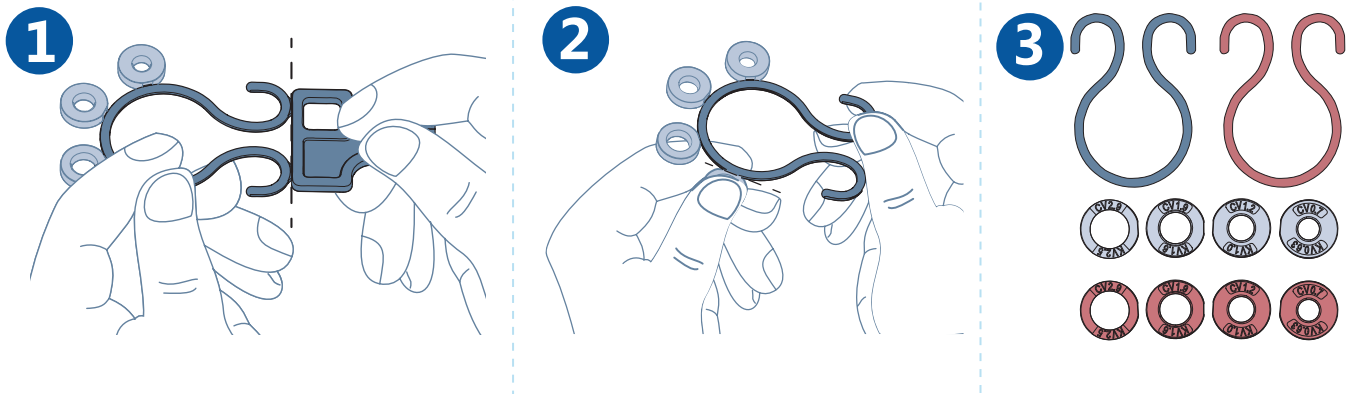
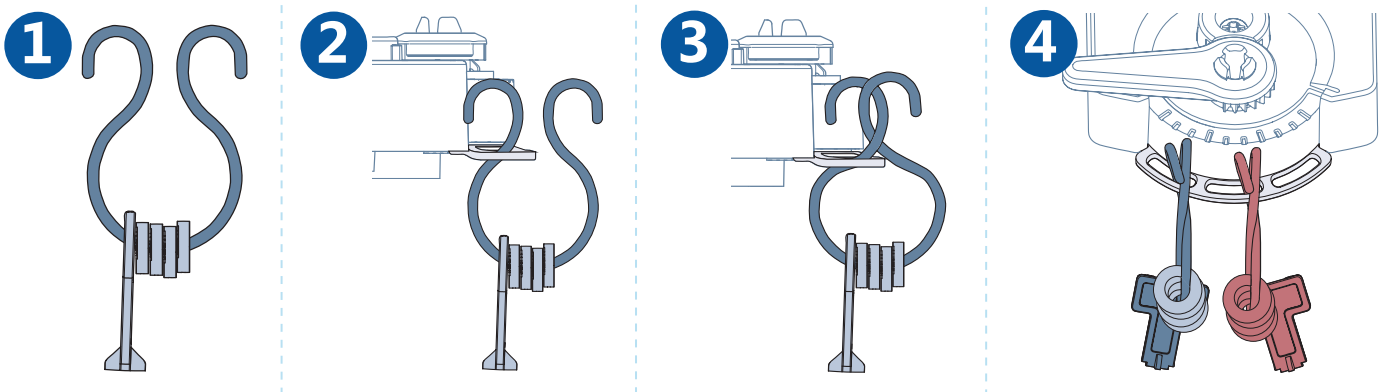


Disassembly



Disk Storage



Installation

Note: Use blue restriction disks with cold water and red disks with hot water only.

Flow restriction disks have markings that indicate the rate of restriction they provide. Using the supplied restriction disks, you can set the following flow rates in port 4 and 6:

Disk Opening	Smallest	Small	Medium	Largest	No Disk
Cv	0.9 ⁵	1.2 ⁴	1.6 ³	2.2 ²	2.7 ¹
Kv	0.8	1.0	1.4	1.9	2.3

Note: 1 - no Cv disc, use 2.9 Cv disc, use 1.9 Cv disc, use 1.2 Cv disc, use 0.7 Cv disc

